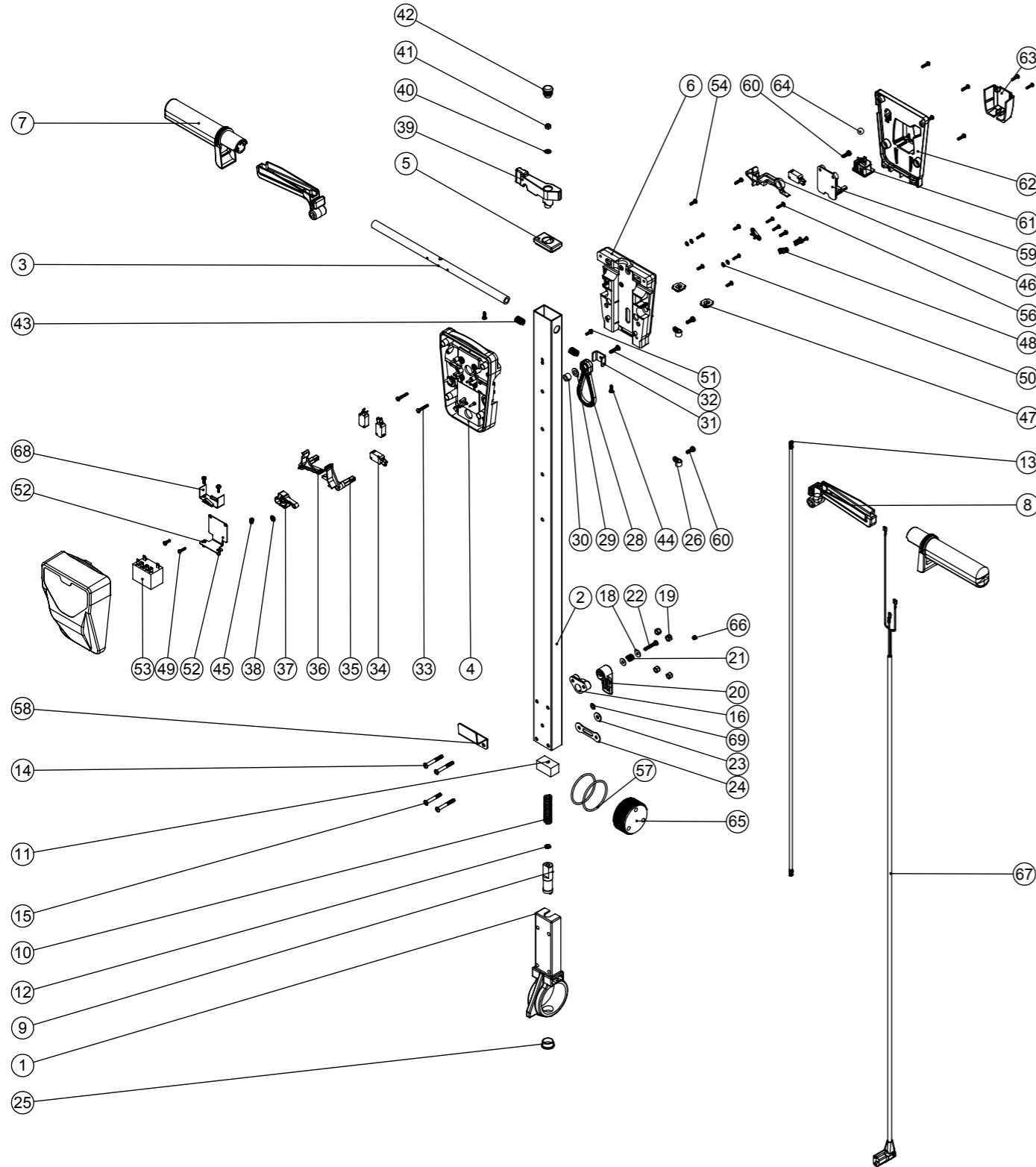


# Numatic International Spare Parts

**Model No:** HFM HANDLE EXPLODED DRAWING

NB: FOR WIRING SEE DRAWING: DRW-11789

206500 ADDED TO DRAWING  
DRAWING: DRW-12376 ISS:A03  
13/06/2013



# Numatic International Spare Parts

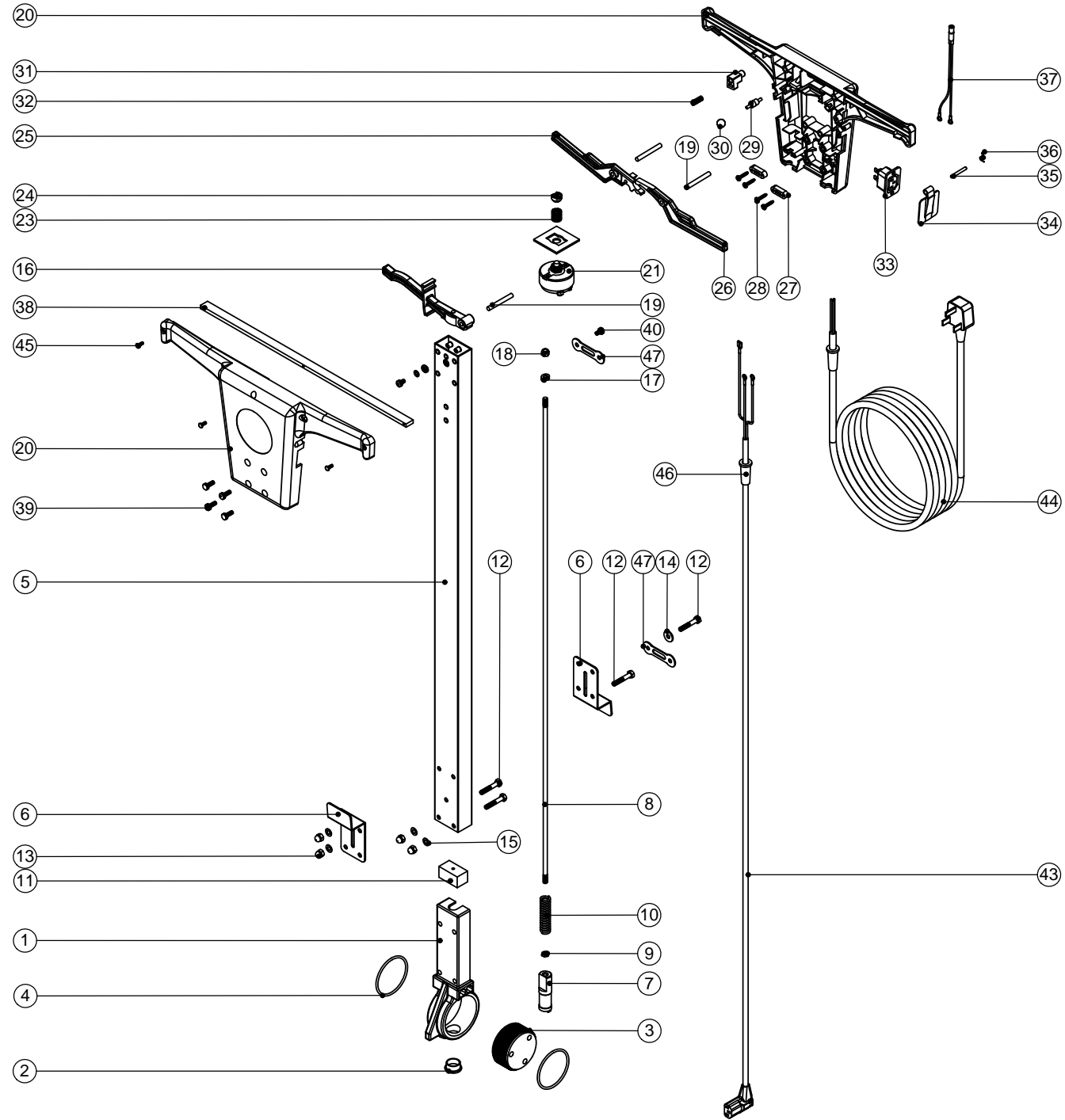
**Model No:** HFM HANDLE EXPLODED DRAWING

ITEM NO.	PART NO.	DESCRIPTION	QTY.
1	229081	HANDLE CASTING MACHINED	1
2	429136	HFM HANDLE TUBE PAINTED (1025mm)	1
3	338269	CROSS TUBE	1
4	227576	FRONT INNER HALF MOULDING	1
5	227582	HANDLE PLUG MOULDING	1
6	227577	REAR INNER HALF MOULDING	1
7	227580	HAND GRIP MOULDING	2
8	227581	TRIGGER MOULDING	2
9	229073	GEAR LOCKING PIN	1
10	229138	SPRING	1
11	229030	ANTI VIBRATION PAD	1
12	219099	M6 HALF NUT	1
13	208432	1035MM HANDLE LOCKING ROD	1
14	219881	M6 X 45MM SOCKET BUTTON HEAD SCREW	3
15	219807	M6 X 40MM LONG SOCKET BUTTON HEAD BOLT	1
16	227806	CABLE RELEASE BASE MOULDING	1
17	219076	M5 NYLON INSERT NUT	1
18	219644	M5 FORM G STAINLESS STEEL WASHER	3
19	219088	M6 NYLON INSERT NUT	4
20	227807	CABLE RELEASE TOP MOULDING	1
21	206599	SPRING (REF:C5514370)	1
22	219720	M5 X 30MM LONG STAINLESS STEEL POZI PAN SCREW	1
23	219008	M6 FORM G WASHER	1
24	229139	CABLE CLAMP	1
25	229099	25MM DIA HOLE PLUG	1
26	219393	P CLIP	2
70	229679	TRADELIN TWINTEC HANDLE FRONT COVER MOULDING	1
28	226008	STRESS RELIEF	1
29	219010	M8 FORM A WASHER	1
30	226006	SPACER (BLACK)	1
31	329231	STRESS RELIEF BRACKET	1
32	219054	M5 X 20MM LONG POZI PAN SCREW	1
33	219811	NO8 X 1 INCH LONG POZI-PAN SELF TAP SCREW	2
34	229483	SNAP ACTION SWITCH	4
35	227585	LEFT HAND SWITCH OPERATING LEVER MOULDING	1
36	227586	RIGHT HAND SWITCH OPERATING LEVER MOULDING	1
37	227587	CENTRE SWITCH OPERATING LEVER MOULDING	1
38	219805	4MM SPIREFIX	1
39	227583	ADJUSTMENT LEVER MOULDING	1
40	219493	M6 NYLON WASHER	1
41	219642	M6 STAINLESS STEEL NYLON INSERT NUT	1
42	20638V	19MM BLACK TUBE END STOP	1
43	219803	TRIGGER COMPRESSION SPRING	2
44	219270	NO8 X 1/2 INCH LONG POZI PAN SELF TAP SCREW	2
45	219804	SWITCH COMPRESSION SPRING	1
46	227584	INTERLOCK LEVER MOULDING	1
47	237467	BLANKING PLUG WITH HOLE	2
48	229669	LOLINE HANDLE CABLE CLAMP	2
49	219107	NO6 X 5/8 INCH LONG POZI PAN PLASTITE SCREW	9
50	219206	M4 FORM A WASHER	4
51	219471	M4 X 12MM LONG POZI PAN SEMS SCREW	3
52	303526	NUTSERTED RELAY MOUNTING BRACKET	1
53	206575	240V / 25A RELAY	1
54	219101	NO8 X 1/2 INCH LONG POZI PAN PLASTITE SCREW	5
56	219105	NO8 X 5/8 INCH LONG POZI PAN PLASTITE SCREW	8
57	219254	O RING 3MM DIA X 60MM I/D	2
58	329000	HANDLE BRACKET	1
59	237425	PTO SUPPORT MOULDING	1
60	219045	M5 X 16MM LONG POZI PAN SEMS SCREW	4
61	220964	APPLIANCE OUTPUT SOCKET	1
62	237426	FM REAR COVER MOULDING	1
63	237427	FM PLUG COVER MOULDING	1
64	229050	12MM (STAINLESS STEEL) BALL BEARING	1
65	229074	ADJUSTMENT GEAR	1
66	229009	BLANKING PLUG	1
67	236161	HFM HANDLE CORD SET ASSEMBLY	1
68	206500	RELAY BRACKET	1
69	219007	M6 FORM B WASHER	1

# Numatic International Spare Parts

Model No: NPR HANDLE EXPLODED DRAWING ASSEMBLY

16/06/2009  
DRAWING: DRW-4022  
234651 A01



# Numatic International Spare Parts

Model No: NPR HANDLE EXPLODED DRAWING ASSEMBLY

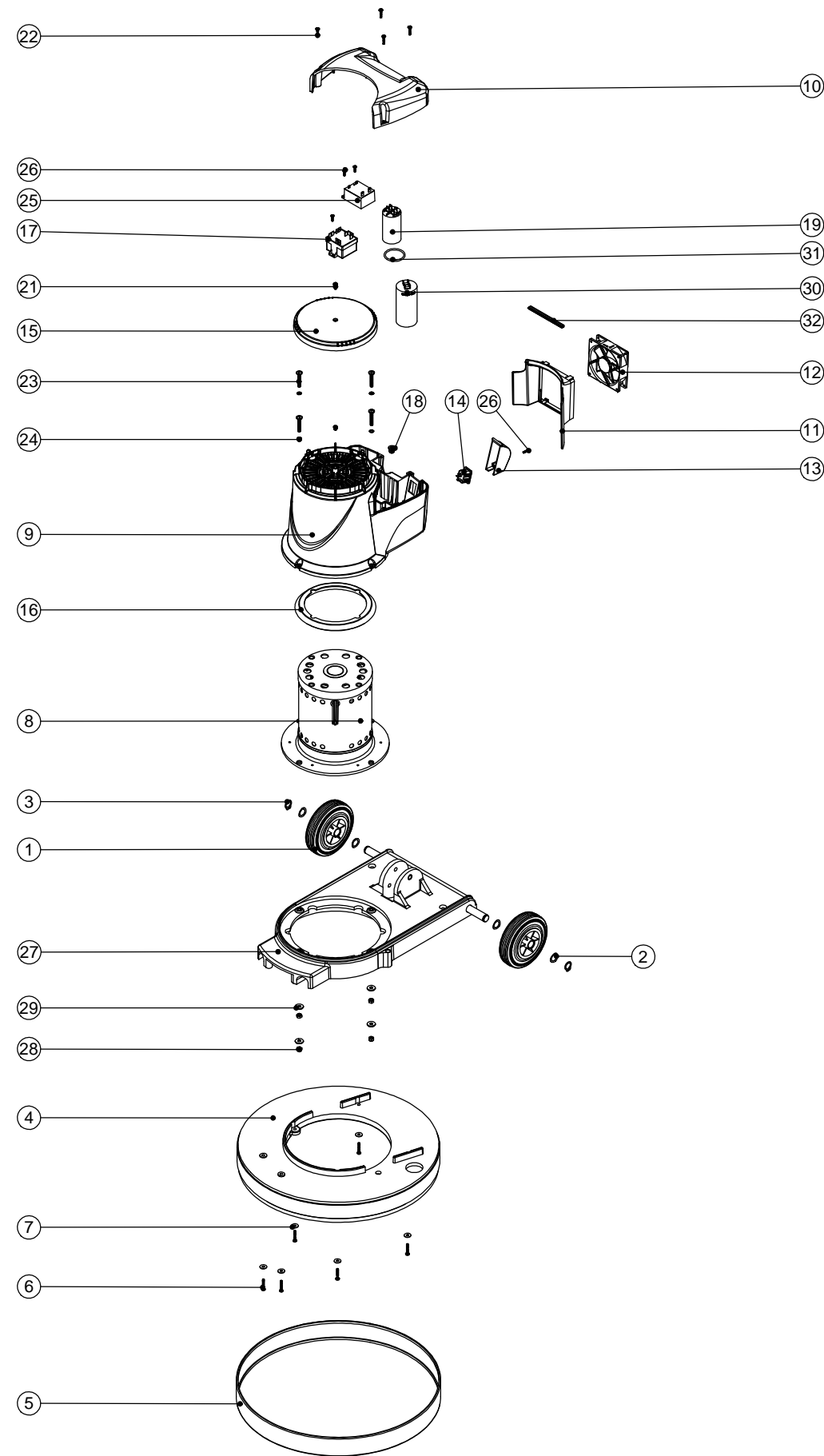
POS	ITEM NO:	DESCRIPTION:	COMMENTS:
1	229081	HANDLE CASTING MACHINED	
2	229099	25MM DIA HOLE PLUG	
3	229074	ADJUSTMENT GEAR	
4	219254	O RING 3MM DIA X 60MM I/D	
5	429044	FLOOR MACHINE HANDLE (PAINTED SILVER)	
6	304172	(STAINLESS STEEL) MOUNTING BRACKET	
7	229073	GEAR LOCKING PIN	
8	229355	891MM HANDLE LOCKING ROD	
9	219099	M6 HALF NUT	
10	229138	SPRING	
11	229030	ANTI VIBRATION PAD	
12	219064	M6 X 35MM LONG HEX BOLT	
13	219080	M6 DOMENUT	
14	219008	M6 FORM G WASHER	
15	219007	M6 FORM B WASHER	
16	229003	ADJUSTMENT LEVER	
17	219017	M6 DOUBLE COIL SPRING WASHER	
18	219088	M6 NYLON INSERT NUT	
19	229071	LEVER MOUNTING PIN	
20	229254	HANDLE BOX MOULDING (GRAPHITE) WITH HOLE	
21	229448	SWITCH + NUTS	
22	229011	SWITCH PLATE	
23	229028	SWITCH SPRING	
24	219818	MOULDED WASHER	
25	229001	RIGHT HAND BLACK SWITCH LEVER	
26	229000	LEFT HAND BLACK SWITCH LEVER	
27	227008	BLACK CABLE CLAMP	
28	219107	No6 X 5/8 INCH LONG POZI PAN PLASTITE SCREW	
29	229033	BLANKING PIN	
30	229050	12MM (STAINLESS STEEL) BALL BEARING	
31	229066	RELEASE BUTTON	
32	219323	COMPRESSION SPRING	
33	229018	POWER TAKE OFF SOCKET	
34	229032	FLAP	
35	229035	FLAP PIVOT PIN	
36	229034	FLAP TORSION SPRING	
37	320074	240V HANDLE NEON INDICATOR ASSEMBLY	
38	229076	SUPPORT STRIP	
39	219045	M5 X 16MM LONG POZI PAN SEMS SCREW	
40	219047	M5 X 10MM LONG POZI PAN SEMS SCREW	
41	219153	EARTHING CUP WASHER	
42	219003	M5 FORM A STEEL WASHER	
43	229249	CORD SET ASSEMBLY	
	220685	1400MM LONG CSA CORD SET ASSEMBLY (110V)	OPTIONAL CORD SET
44	236088	MAINS CABLE (15.0 METERS / 1.5MM / 3 CORE CABLE / SOCKET + UK PLUG)	OPTIONAL CABLE
	236138	MAINS CABLE (15 METRE/1.5MM WIRE/3 WIRE/YELLOW CABLE/CONTINENTAL PLUG)	OPTIONAL CABLE
	236091	MAINS CABLE (15.0 METERS/14 AWG/3 CORE YELLOW CABLE/SJTW 5-15 CSA PLUG)	OPTIONAL CABLE
	236093	MAINS CABLE (15 METRE / 1.5MM / 3 WIRE / BLACK CABLE / AUSTRALIAN PLUG)	OPTIONAL CABLE
	236094	MAINS CABLE (15 METRE / 1.5MM / 3 WIRE / SWISS PLUG 1262/2)	OPTIONAL CABLE
	236095	MAINS CABLE (15 METRE / 1.5MM / 3 WIRE / M/CABLE / RSA PLUG)	OPTIONAL CABLE
	236098	MAINS CABLE (15.0 M LONG / 3 WIRE / 1.5MM CABLE / 16AMP INDUSTRIAL PLUG)	OPTIONAL CABLE
45	219212	M3.5 X 10MM LONG POZI PAN TAPTITE SCREW	
46	220015	STRESS RELIEF	
47	229139	CABLE CLAMP	

# Numatic International Spare Parts

Model No: NPR 1515/1523/1530/1545 EXPLODED DRAWING

234628  
DRAWING: EXP-1056 ISS:A08  
01/11/2011

NB: FOR WIRING SEE DRAWING: WD-0369



# Numatic International Spare Parts

Model No: NPR 1515/1523/1530/1545 EXPLODED DRAWING

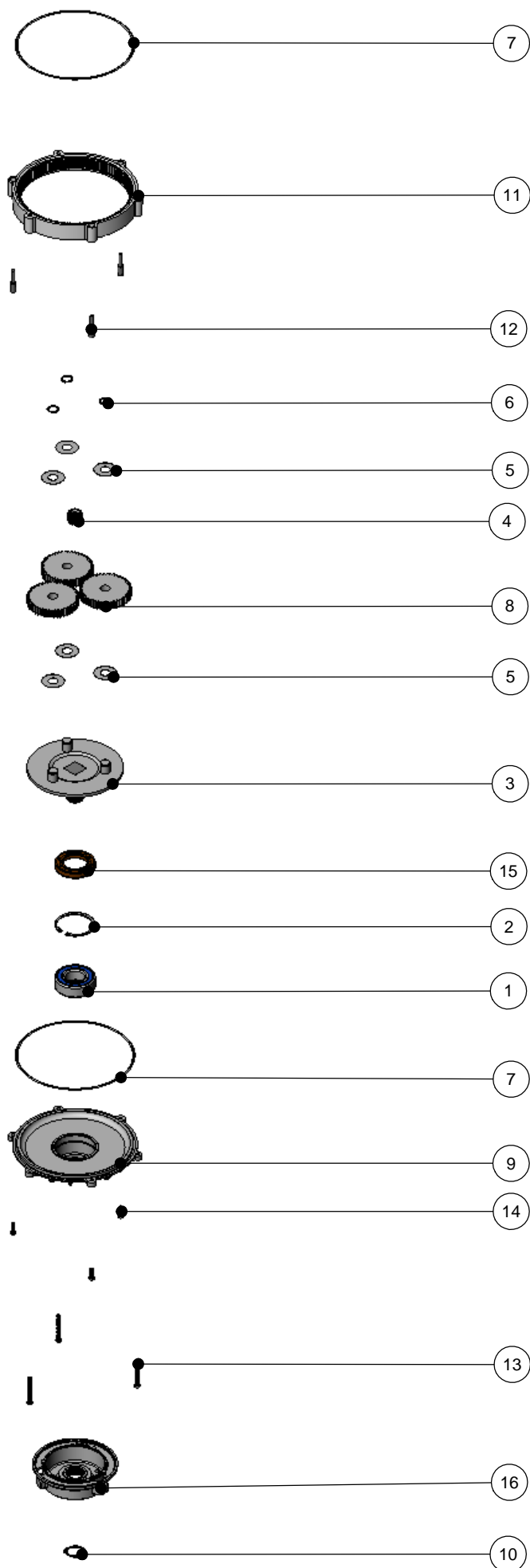
ITEM NO.	Item_No	DESCRIPTION	QTY.
1	229060	WHEEL GREY BLACK HUB	2
2	219219	21.5MM X 16.3MM WAVE WASHER	4
3	229051	EXTERNAL CIRCLIP	2
4	237020	RING MOULD MED MULTIDECK (MID BLUE)	1
5	206478	GREY MEDIUM BUFFER RING	1
6	219369	No8 X 1 INCH LONG POZI PAN STAINLESS STEEL PLASTITE SCREW	6
7	219644	M5 FORM G STAINLESS STEEL WASHER	6
8	205217	COMBINED INDUCTION MOTOR 4POLE 220-240V 50Hz	1
9	328128	BLUE PRINTED MOTOR COWL MOULDING	1
10	229970	NPR / TT BLUE LID MOULDING	1
11	229972	FAN GUARD MOULDING	1
12	205072	PROCESSED 12V DC BRUSHLESS FAN	1
13	229213	PLUG COVER	1
14	220584	RENDAR CLIP IN PLUG	1
15	229971	CAP MOULDING	1
16	227556	TOP MOTOR GASKET	1
17	206823	230V SINGLE SPEED VOLTAGE RELAY	1
18	219453	M8 MULTISERT	1
19	220876	20 MFD MOTOR RUN CAPACITOR (450V)	1
20	219009	M4 BRASS TAPPEX INSERT	1
21	219471	M4 X 12MM LONG POZI PAN SEMS SCREW	1
22	219568	No8 X 3/4 INCH LONG POZI PAN STAINLESS STEEL SCREW	4
23	219643	M6 X 35MM LONG STAINLESS STEEL POZI PAN SCREW	4
24	219544	M6 SHAKEPROOF WASHER	4
25	206753	UNIVERSAL POWER SUPPLY	1
26	219318	No6 X 1/2 INCH LONG POZI PAN PLASTITE SCREW	4
27	304260	MULTIDECK BASE MOULDING SUB ASSY	1
28	219642	M6 STAINLESS STEEL NYLON INSERT NUT	4
29	219647	M6 FORM G STAINLESS STEEL WASHER	4
30	208265	MOTOR START CAPACITOR 100 MFD C/W RESISTOR & M8 STUD	1
31	208535	O RING 39.5MM ID x 3 DIA	1
32	207123	GASKET EXTRUSION	1

HANDLE SECURING KIT ITEM NUMBER - 303549 (BOLT, WASHER & NUT x3)

# Numatic International Spare Parts

**Model No:** NPR & NR RANGE GEARBOX EXPLODED DRAWING (ALL SPEEDS)

233756  
DRAWING: DRW-4439 ISS:A03  
31/10/2011



# Numatic International Spare Parts

**Model No:** NPR & NR RANGE GEARBOX EXPLODED DRAWING (ALL SPEEDS)

POS:	ITEM NO:	DESCRIPTION:	COMMENTS:
1	230094	62MM O/D X 30MM I/D X 20MM BEARING (WITH SEALS)	
2	230200	62MM INTERNAL CIRCLIP	
3	230291	PLANET CARRIER & PIN ASSEMBLY (50HZ STANDARD SPEED)	NPR 1515/S & NR 1500S
	230292	PLANET CARRIER & PIN ASSEMBLY (60HZ HIGH SPEED)	NPR 1523/M, NPR1545/X, NR 1500M & NRS450
	230294	PLANET CARRIER & PIN ASSEMBLY (HIGH SPEED)	NPR 1530/H & NR1500H
4	230027	12 TOOTH PINION GEAR (STANDARD SPEED)	NPR 1515/S & NR 1500S
	230025	20 TOOTH PINION GEAR (50HZ MEDIUM/60HZ HIGH SPEED)	NPR 1523/M, NPR1545/X, NR 1500M & NRS450
	230028	24 TOOTH PINION GEAR (HIGH SPEED)	NPR 1530/H & NR1500H
5	230215	35MM X 15 I/D ALUMINIUM WASHER	
6	230015	15MM EXTERNAL CIRCLIP	
7	230001	V OIL SEAL	
8	230013	48 TOOTH SPUR GEAR (STANDARD SPEED 50/60HZ)	NPR 1515/S & NR 1500S
	230026	44 TOOTH SPUR GEAR (50HZ MEDIUM/60HZ HIGH SPEED)	NPR 1523/M, NPR1545/X, NR 1500M & NRS450
	230014	42 TOOTH SPUR GEAR (HIGH SPEED 50HZ)	NPR 1530/H & NR1500H
9	230208	DIE CAST BOTTOM PLATE ASSEMBLY	
10	230048	26MM EXTERNAL CIRCLIP	
11	214115	GEAR BOX MID SECTION	
12	208207	GEARBOX FASTENER WITH SLOT	
13	219706	M5 X 45MM LONG STAINLESS STEEL HEXAGONAL BOLT	
14	219904	M5 X 16MM LONG HEXAGONAL STAINLESS STEEL BOLT	
15	230158	VITON OIL SEAL (BROWN)	
16	330024	DIE CAST CHUCK MACHINED & PROCESSED	